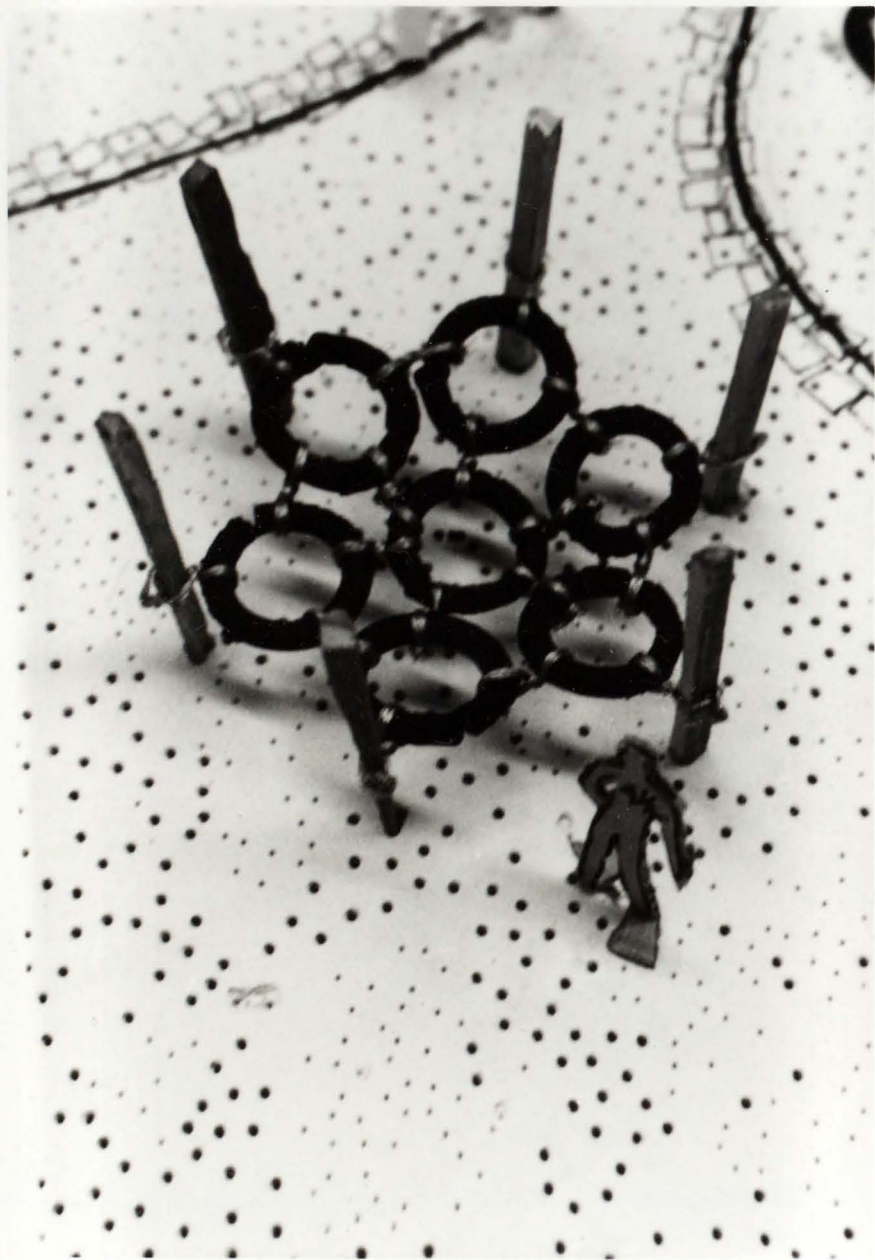
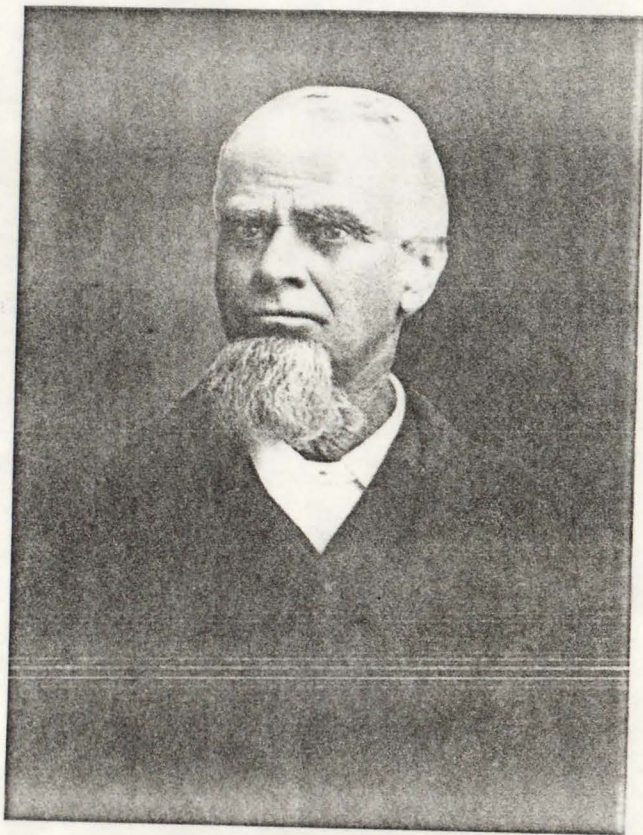




Model Playground Piece  
Scheduled for Completion  
by September 10, 1983.

Photo by: John Gradoville





A. S. KINGMAN

A Smith Kingman  
Pioneer resident of Des Moines Iowa  
for whom the boulevard of that name  
was entitled

EP 16

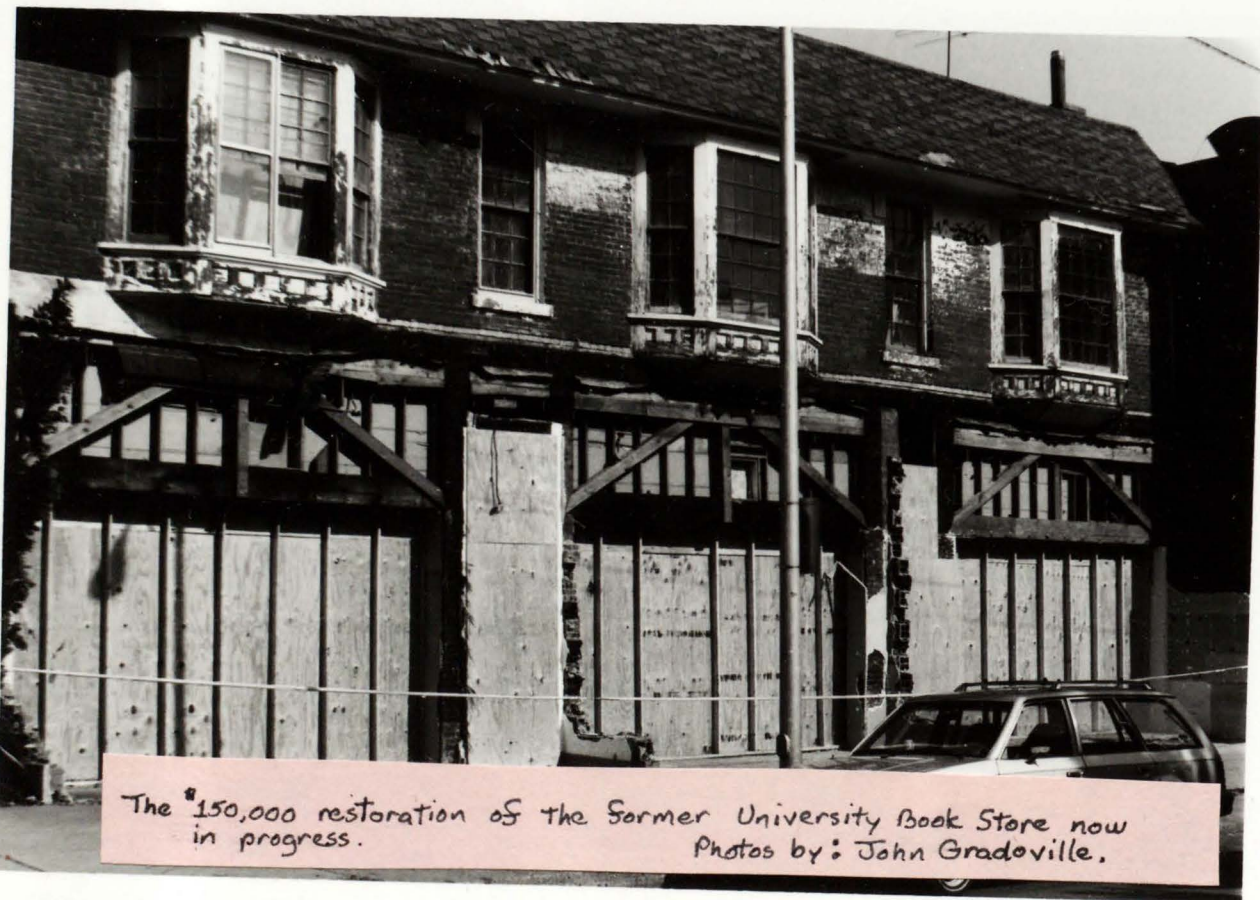
Presented by his daughter Miss Ida  
Kingman April 20 1910.



(from personal files of W. L. "Larry" Cuning,  
Director of Physical Plant, Drake Univ., retired.)



Drake University's \$60,000 Renovation of the post office building for NHS and the Housing Council.



The \$150,000 restoration of the former University Book Store now in progress.  
Photos by: John Gradoville.



NEIGHBORHOOD TREE WATERER GARY SCHMALFELDT (left)  
and CITY FORESTER RAY BAIR (right).

Nominated for this year's outstanding leadership award, Schmalfeldt volunteered more than 200 hours this summer watering more than 500 trees along Kingman Boulevard, along Urbandale Avenue in northwest Des Moines and along Harding Road for the city. He also donated his 7 ton truck and 1200 gallon water truck to the cause. Bair salvaged more than 50 flowering black locusts (like the one shown here) from a demolition site for planting in the Drake area.

1983

Photo by Warren Taylor.





ARCHITECT JUDY MCCLURE

McClure donated \$9000 worth of time this year preparing site analysis forms (shown here in the five binders) on the 500 homes in the Cottage Grove Historic Area. The forms will enable the area to be placed on the National Register. Such designation would make the Cottage Grove area the state's largest historic district on the National Register.

Photo by: John Grodoville





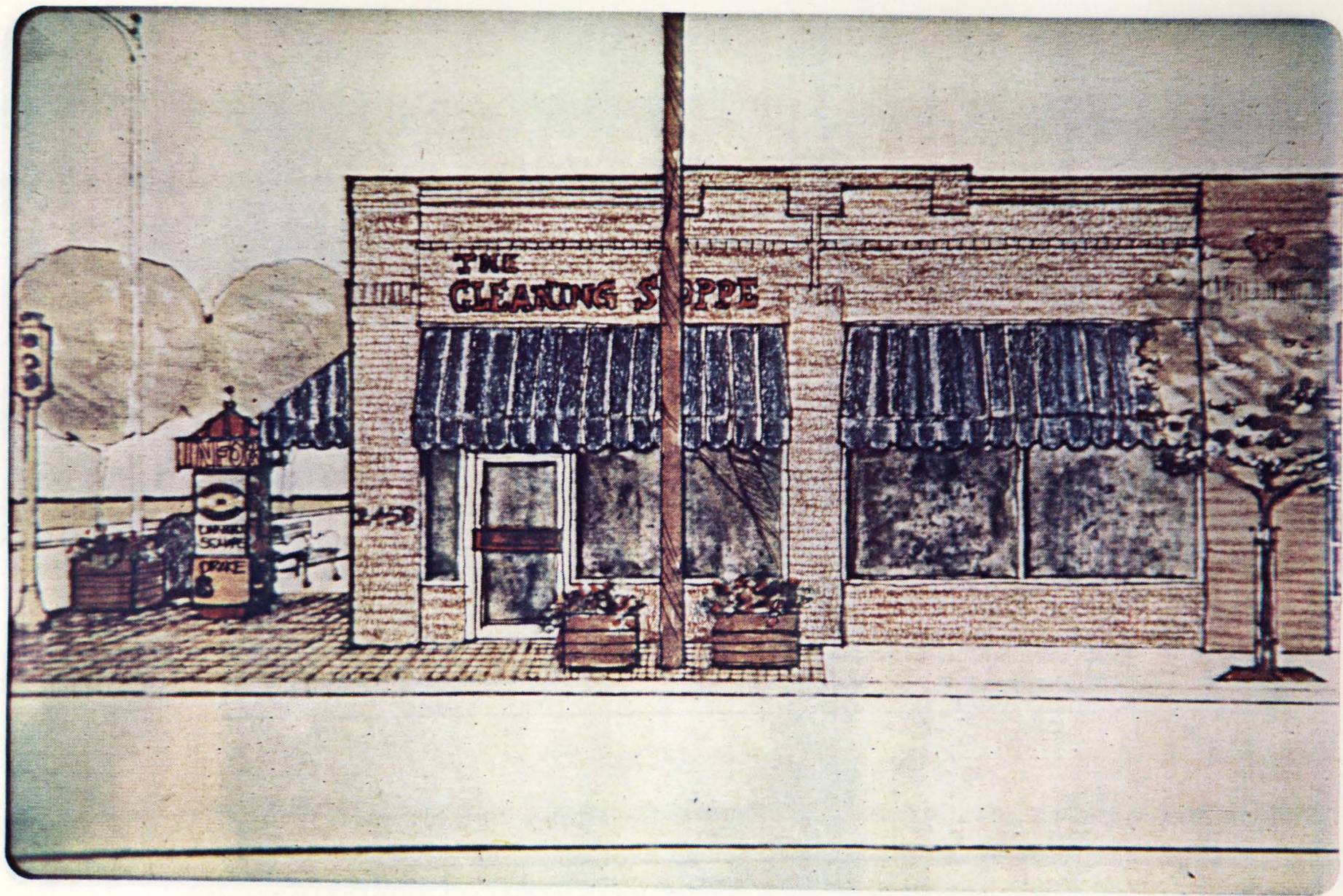
1128 - 27th Street



1128 - 27th Street

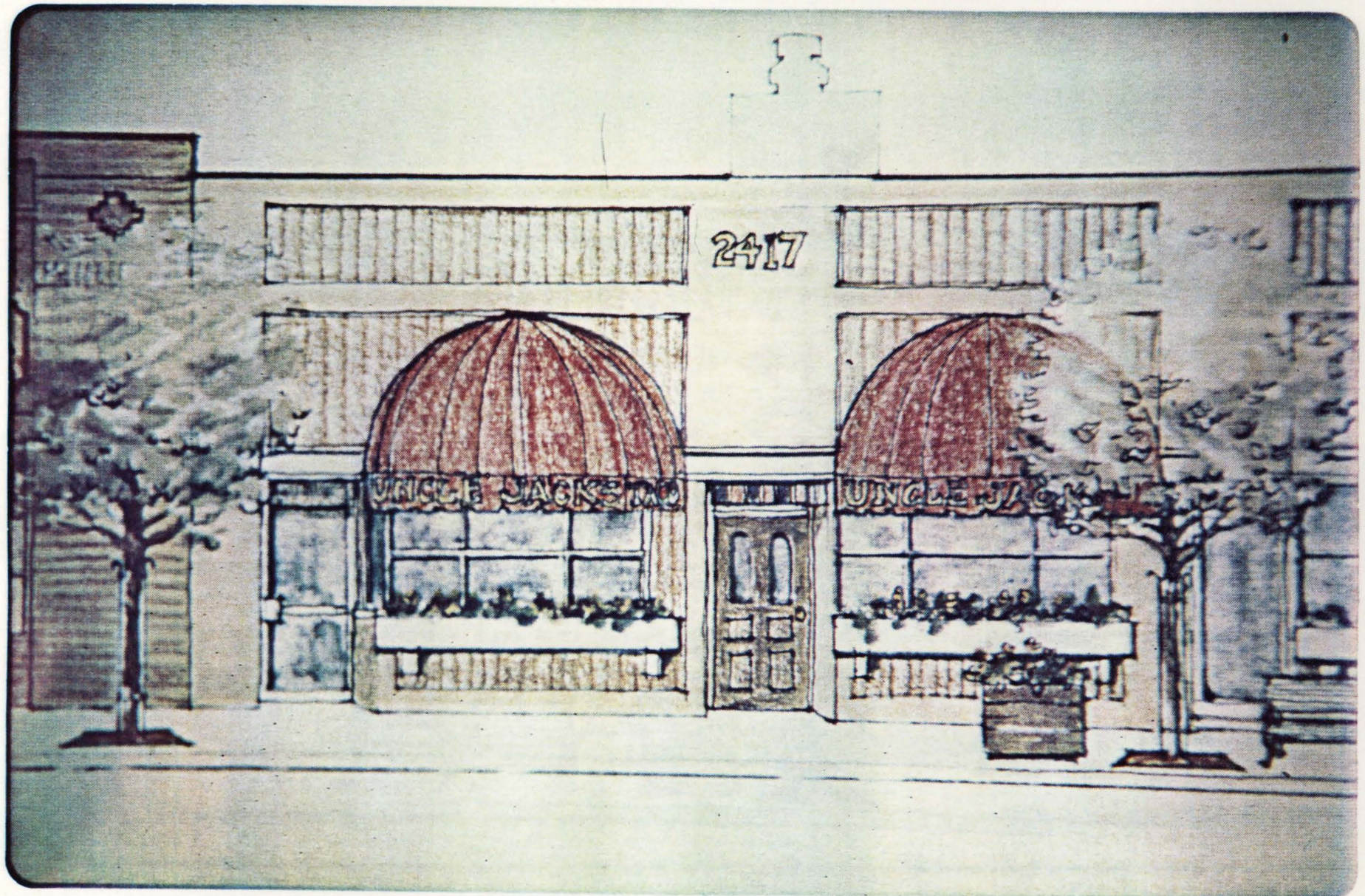


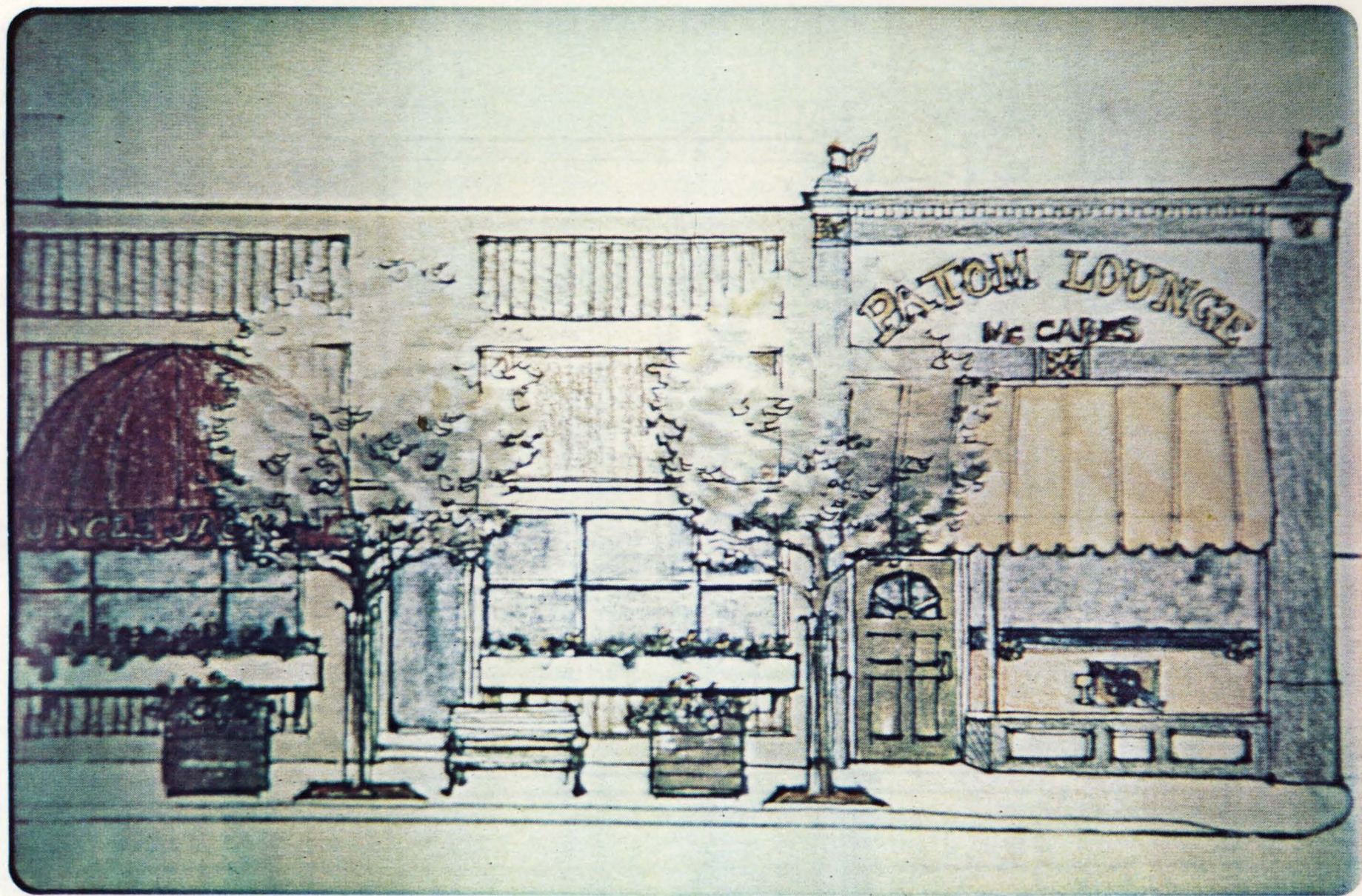
1128 - 27th Street - before

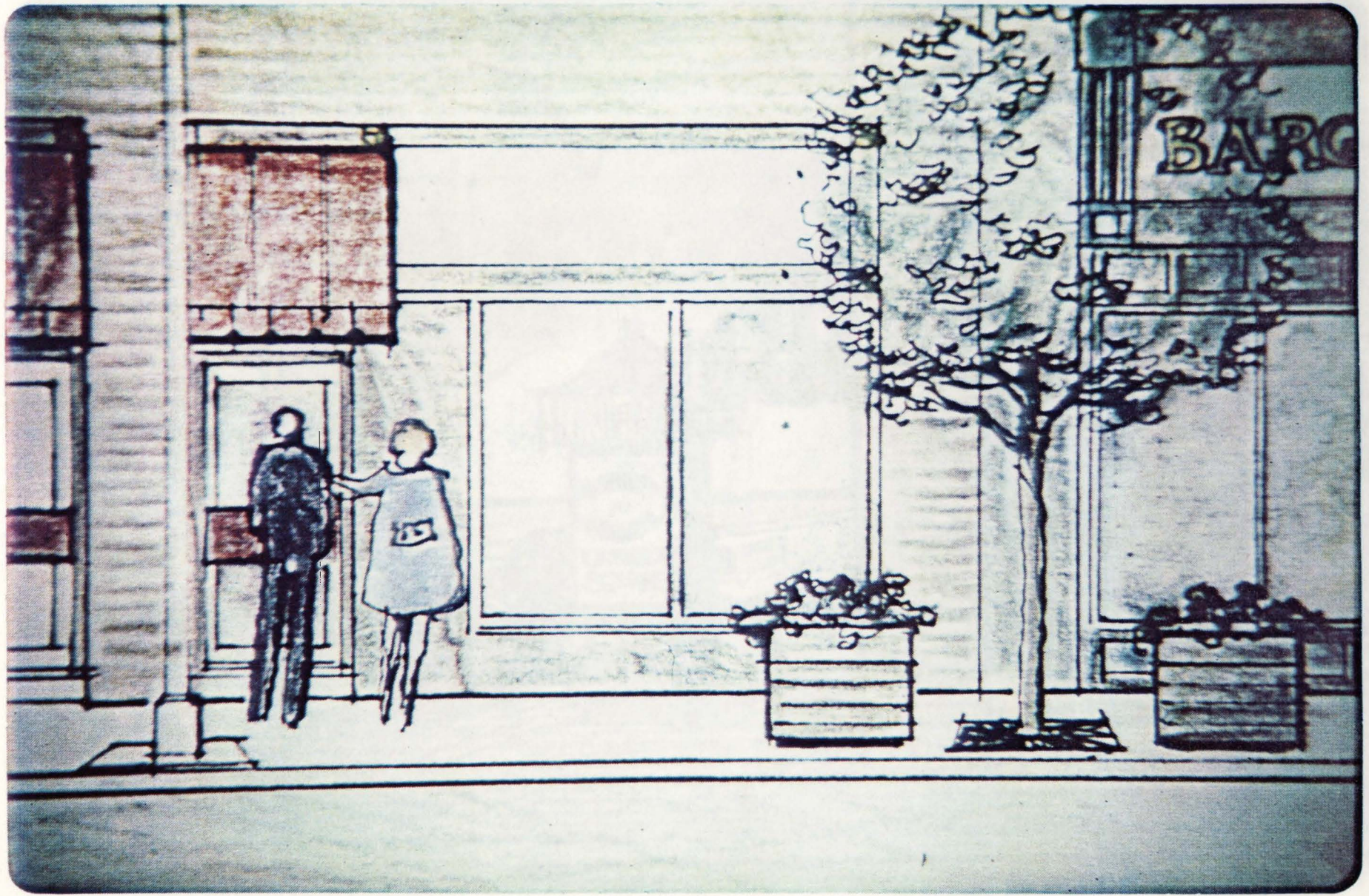


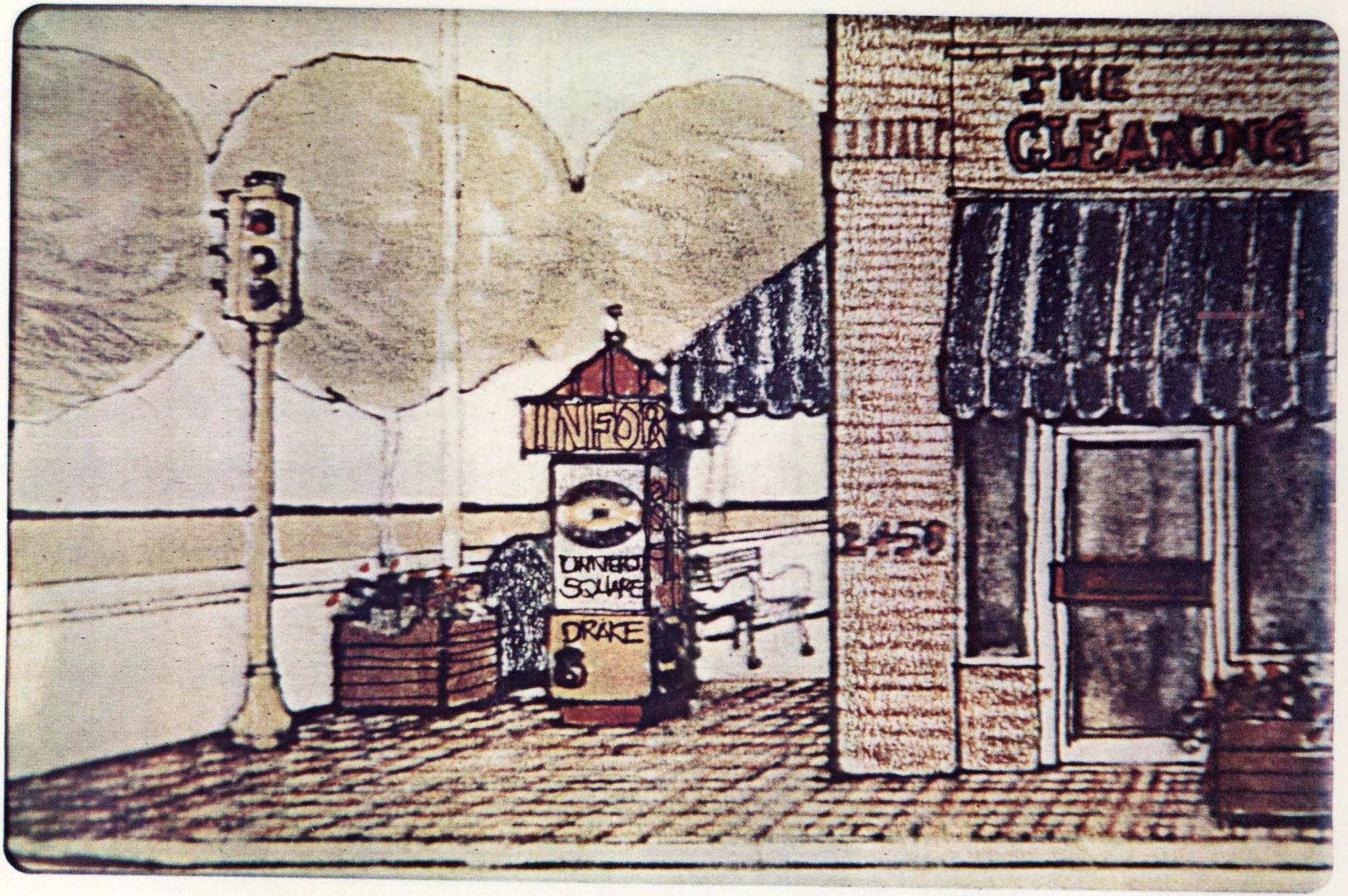


The Stationery Store









THE  
CLEANING

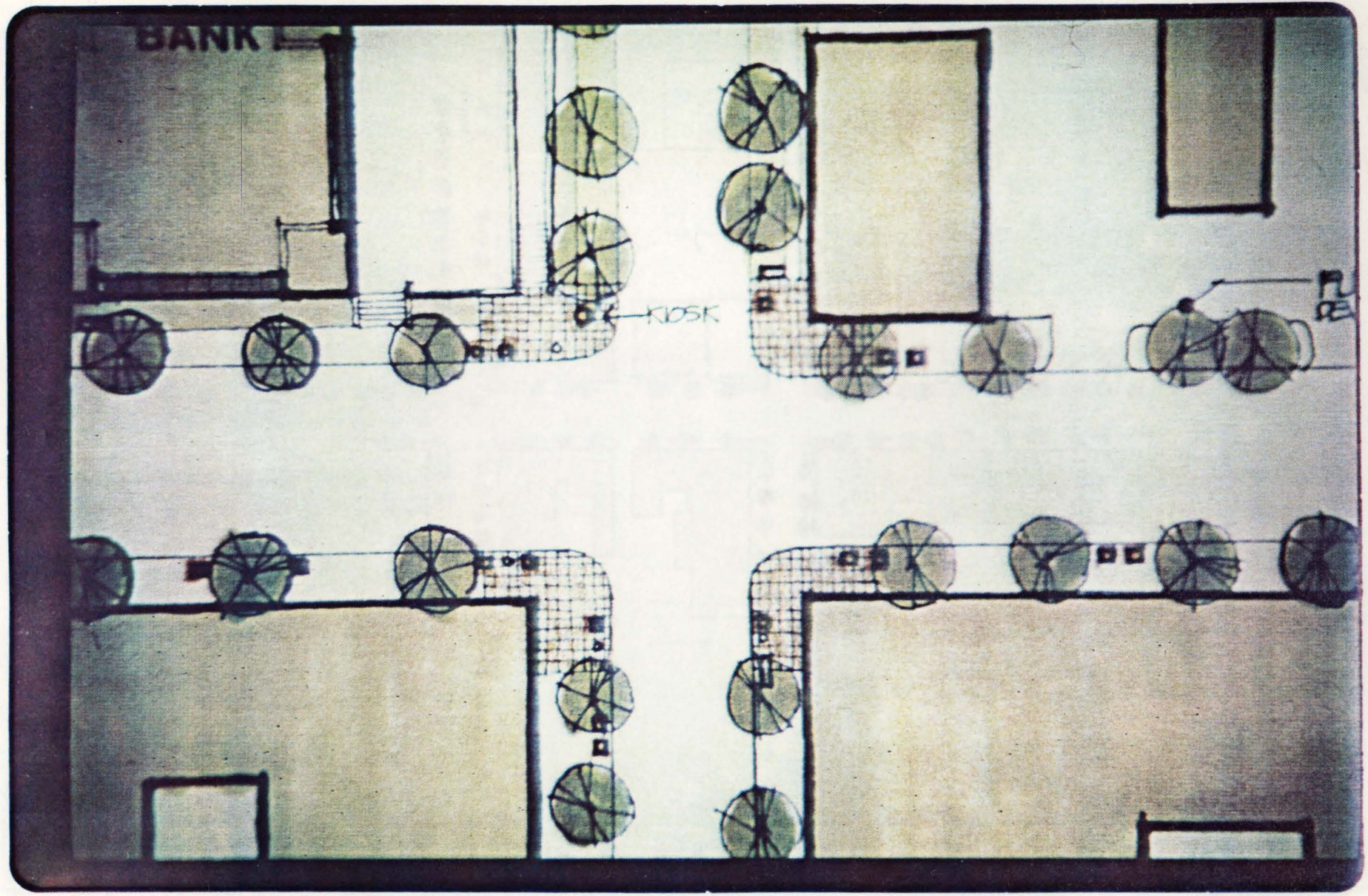
INFORMATION

DRINKER  
SQUARE

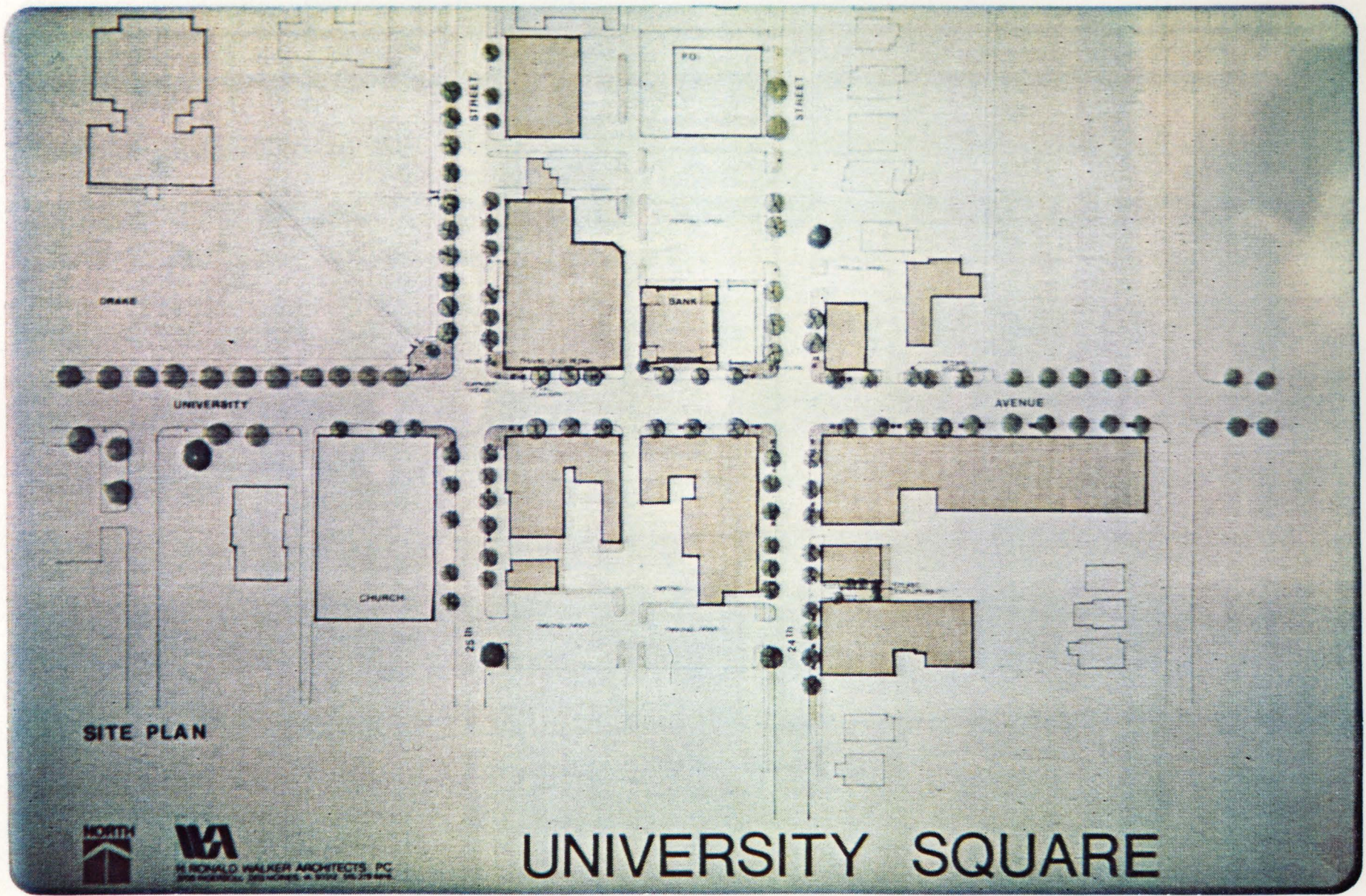
DRAKE

8

2450







CRANE

STREET

STREET

UNIVERSITY

AVENUE

CHURCH

BANK

PD

SITE PLAN



WALKER ARCHITECTS, P.C.  
200 UNIVERSITY AVENUE, SUITE 200, WASHINGTON, DC 20004

UNIVERSITY SQUARE

